

CROSSFLOW FILM FILL PACKAGE COOLING TOWER



Number 11-40-01



TYH SERIES

LOW NOISE - ENERGY SAVINGS

TYH SERIES

Rectangular Cross Flow Cooling Tower

is more superior on its motor, fan and noise - reduction to other rectangular cross flow cooling towers.



Fill & Drift Eliminator Design

- Energy cost, the thermal design point, and water quality are example of factor which influence the choice of fill.
- This fill is thermally vacuum formed from rigid polyvinyl chloride (PVC). The fill will be able to withstand temperature of up to 52 C. Integral drift eliminator and louvers keep circulation water confined to fill over a wide range of flowrates. The drift loss is less than 0.005% of the cooling tower design flowrate.
- Patented waved fill design significantly increases cooling tower efficiency as its expansive surface area accelerates cooling. This increased efficiency translates to reduced pump head and horsepower requirements. The special configuration of the filler incorporate the function of drift eliminator, louver and heat exchanging surface, make TYH be more compact. The honeycomb shaped louver feature contributes minimum resistance to airflow.



High Efficient Fan

- Fabricated are from Aluminum Alloy. Fan hubs are fabricated with hot-dip galvanized circular plate. The aerodynamic shape together with the lower tip speed ensure a lower noise level. The fan are adjustable for in pitch for permitting maximum utilization of rated horsepower and optimum performance
- Advantages: High efficiency, lower tip speed, light weight, low power consumption, low noise, low vibration



Mechanical Part

- Dynamic balanced pulleys ensure quiet operation and low vibration.
- Totally enclosed bearing with heavy duty self-aligning ball type is designed for a minimum of 75,000 hours life span. Cast iron housing and flexible cap protect the bearing from extreme environmental attack such like rain, vibration and various kind of impact.





Space & Cost Savings

- Large Single Cell concept and option for internal piping save space and additional piping and instrumentation.



Efficient Water Distribution

- Polypropylene Target Nozzles are essential to ensure maximum water distribution over the fills



Proven Installation & Reliability

- TYH Series have been installed in numerous prestigious buildings and factories
- Customer satisfaction testified by its long list of proven installation



Easy Access For Services

- Easy access for routine inspection and maintenance. HDG Steel plenum walkway is a standard accessory.



Corrosion Resistance

- The casing, hot and cold water distribution basins are made of FRP (an excellent non-corrosive material)
- The frame and other steel sections are hot dip galvanized to ensure corrosion resistance (Stainless steel structure available as option)



Low Maintenance Cost

- Heavy Duty aluminum alloy fans, fan bearing and stainless steel fan shafts require only periodic maintenance
- Low maintenance materials are used throughout the cooling tower
- Wide spaced flow fill helps prevent clogging
- The fills are easily accessible for cleaning



Right Angle Gearbox Drive Option

- Gearbox Drive Option in lieu of Belt Drive System is readily available for cooling tower that requires rugged and continuous operation.

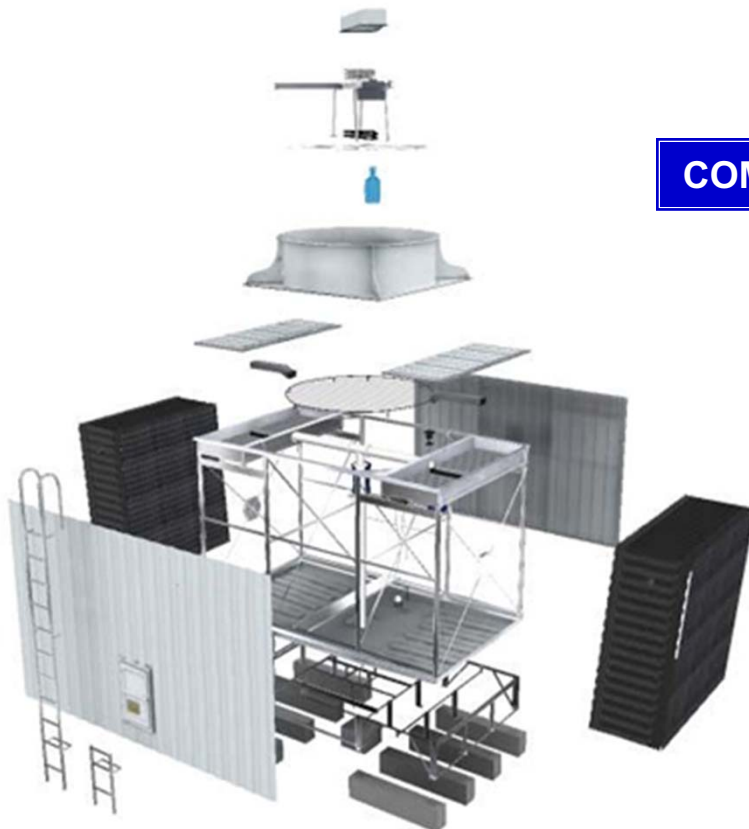
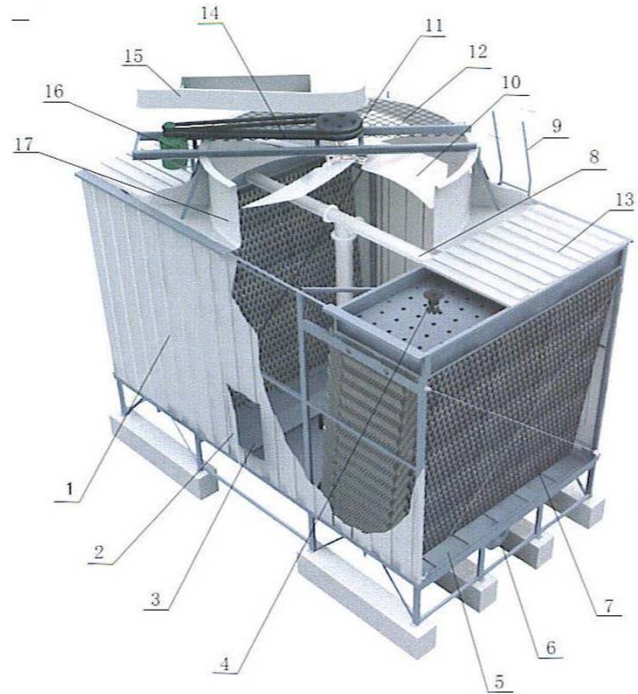


After Sales Service

- Thermal-Cell provides quality maintenance, service and refurbishment for all types of cooling tower

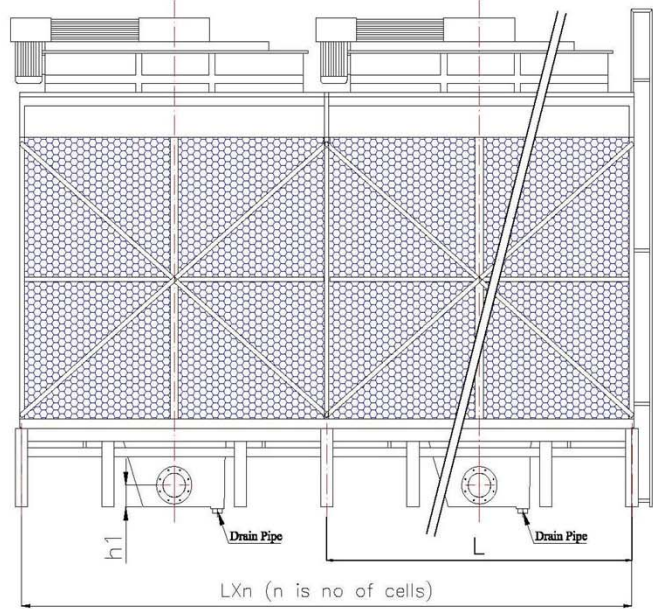
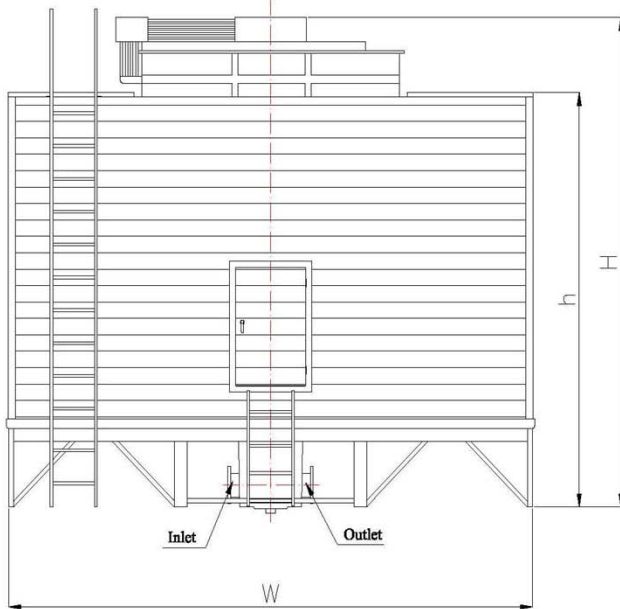
MATERIALS SPECIFICATION

1. Casing – FRP
2. Access Door – FRP
3. Walkway – HDG Steel
4. Nozzles – Polypropylene
5. Cold Water Basin - FRP
6. Base Structure – HDG Steel
7. Film Fill - PVC
8. Internal Piping – HDG Steel (Optional)
9. Access Ladder – HDG Steel
10. Fan Blade - Aluminum
11. Pulley – Cast Iron
12. Fan Guard – HDG Steel
13. Hot Water Basin Covers - FRP
14. Belt - Rubber
15. Pulley Cover - FRP
16. Mechanical Support – HDG Steel
17. Fan Cylinder - FRP



COMPONENTS EXPLODE VIEW

COOLING TOWER DIMENSIONS



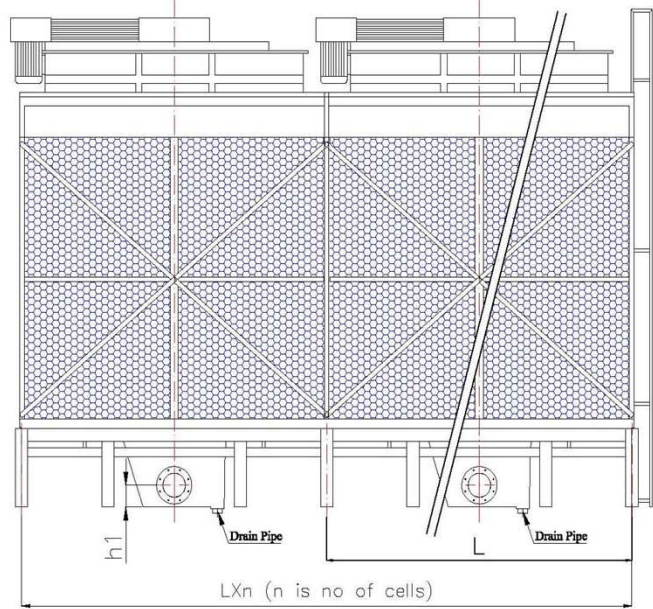
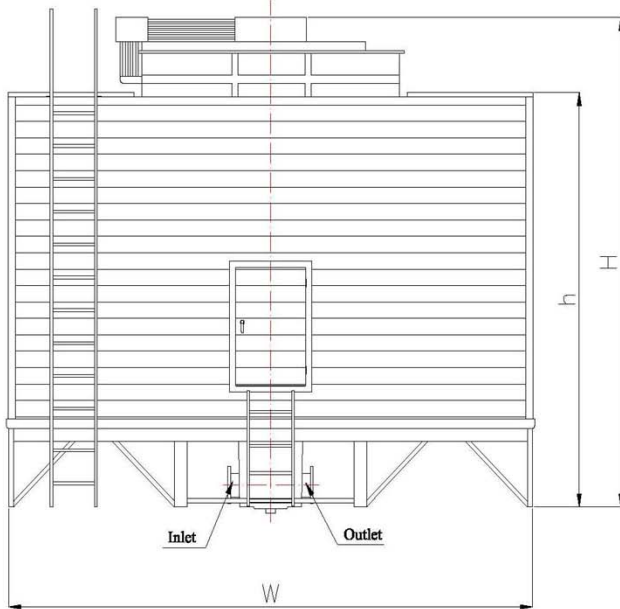
TYH - TYPE "C"

Parameter Model	Cooling Water Flowrate m ³ /h	Power System		Outline Dimensions					Piping Connections						Pump Head m	Weight		
		Fan Dia Φ mm	Motor Power Kw	Length		Width		High		Inlet Dia mm	Outlet Dia mm	Overflo w Dia mm	Auto Make Up Dia mm	Quick Make Up Dia mm		Drain Dia mm	Dry kg	Wet kg
				{L}	{W}	{h1}	{H}	{h}										
TYH-100C	100	1500	3	1900	3480	170	3630	3060	150x1	150x1	80	20	20	50	3.7	1050	2250	
TYH-125C	125	1500	4	2100	3480	170	3630	3060	150x1	150x1	80	20	20	50	3.7	1150	2350	
TYH-150C	150	1800	4	2100	3780	170	4270	3680	150x1	150x1	80	20	20	50	4.1	1250	2550	
TYH-175C	175	2200	5.5	2600	4180	200	4400	3680	200x1	200x1	80	20	20	50	4.1	1350	2850	
TYH-200C	200	2200	5.5	2600	4180	200	4600	3880	200x1	200x1	80	25	25	50	4.3	1520	3130	
TYH-225C	225	2200	7.5	2600	4180	200	4810	4090	200x1	200x1	80	25	25	50	4.6	1620	3770	
TYH-250C	250	2500	7.5	3000	4480	200	4810	4090	200x1	200x1	80	25	25	50	4.6	2080	4300	
TYH-300C	300	2500	7.5	3000	5080	200	4410	3690	200x1	200x1	80	25	25	50	4.2	2420	5070	
TYH-350C	350	2500	11	3000	5080	200	4810	4090	200x1	200x1	80	40	40	50	4.6	2550	5300	
TYH-400C	400	2950	11	3300	5550	220	5030	4190	125x4	250x1	80	40	40	50	4.7	2850	6200	
TYH-450C	450	2950	11	3300	5550	220	5640	4800	125x4	250x1	80	40	40	50	5.5	3250	6600	
TYH-500C	500	2950	15	3800	5550	250	5640	4800	150X4	300x1	80	40	40	50	5.5	3550	7400	
TYH-550C	550	3400	15	3800	6000	250	5800	4900	150x4	300x1	80	50	50	50	5.6	4050	8200	
TYH-600C	600	3400	15	4600	6000	250	5800	4900	150X4	300x1	80	50	50	50	5.6	4650	9800	
TYH-700C	700	3600	18.5	4600	6200	250	6000	5100	150X4	300x1	80	50	50	50	5.8	5050	10500	
TYH-800C	800	3600	22	5100	6200	250	6000	5100	150X4	300x1	80	50	50	50	5.8	5450	11500	
TYH-900C	900	4200	30	5300	6800	310	6850	5510	200X4	350x1	80	50X2	50	50	6.2	6250	13800	
TYH-1000C	1000	4700	37	5500	7300	310	7200	6100	200X4	350x1	80	50X2	50	50	6.8	6950	15500	

NOTE:

1. HDG Steel Internal piping is standard for model TYH-100C to TYH-350C
2. Motor (TEFC) is outside airstream for Model TYH-100C to TYH-300C.
3. Motor (TEAO) is inside airstream for Model TYH-350C to TYH-1000C
4. FRP Hot Water Basin Covers are standard accessory
5. HDG Steel Plenum Walkway is standard accessory
6. All Flanges are per JIS10K bolt pattern unless advise otherwise. Other bolt patterns are available. Connecting Flanges are provided.
7. Flowrate based on 37 °C Hot Water, 32 °C Cold Water, 28 °C Wet Bulb

COOLING TOWER DIMENSIONS



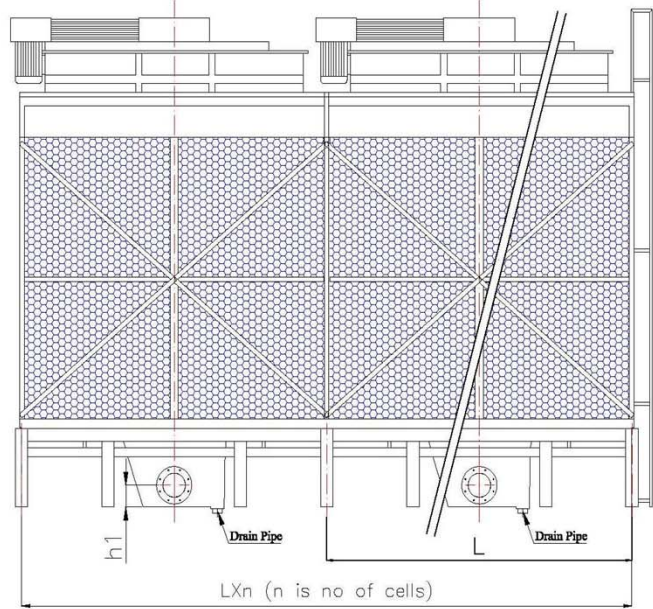
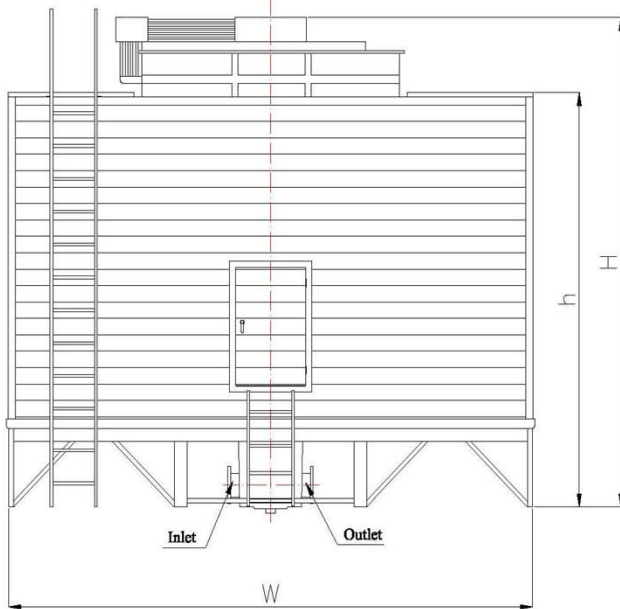
TYH - TYPE "T"

Parameter Model	Cooling Water Flowrate m ³ /h	Power System		Outline Dimensions					Piping Connections						Pump Head m	Weight		
		Fan Dia Φ mm	Motor Power Kw	Length		Width		High		Inlet Dia mm	Outlet Dia mm	Overflo w Dia mm	Auto Make Up Dia mm	Quick Make Up Dia mm		Drain Dia mm	Dry kg	Wet kg
				(L) mm	(W) mm	(h1) mm	(H) mm	(h) mm										
TYH-100T	115	1500	4	1900	3480	170	3630	3060	150x1	150x1	80	20	20	50	3.7	1060	2260	
TYH-125T	136	1500	5.5	2100	3480	170	3630	3060	150x1	150x1	80	20	20	50	3.7	1170	2370	
TYH-150T	164	1800	5.5	2100	3780	170	4270	3680	150x1	150x1	80	20	20	50	4.1	1270	2570	
TYH-175T	203	2200	7.5	2600	4180	200	4400	3680	200x1	200x1	80	20	20	50	4.1	1370	2870	
TYH-200T	218	2200	7.5	2600	4180	200	4600	3880	200x1	200x1	80	25	25	50	4.3	1540	3150	
TYH-225T	245	2200	11	2600	4180	200	4810	4090	200x1	200x1	80	25	25	50	4.6	1670	3820	
TYH-250T	276	2500	11	3000	4480	200	4810	4090	200x1	200x1	80	25	25	50	4.6	2130	4350	
TYH-300T	321	2500	11	3000	5080	200	4410	3690	200x1	200x1	80	25	25	50	4.2	2470	5120	
TYH-350T	376	2500	15	3000	5080	200	4810	4090	200x1	200x1	80	40	40	50	4.6	2580	5330	
TYH-400T	425	2950	15	3300	5550	220	5030	4190	125x4	250x1	80	40	40	50	4.7	2880	6230	
TYH-450T	481	2950	15	3300	5550	220	5640	4800	125x4	250x1	80	40	40	50	5.5	3280	6630	
TYH-500T	520	2950	18.5	3800	5550	250	5640	4800	150X4	300x1	80	40	40	50	5.5	3600	7450	
TYH-550T	573	3400	18.5	3800	6000	250	5800	4900	150x4	300x1	80	50	50	50	5.6	4100	8250	
TYH-600T	625	3400	18.5	4600	6000	250	5800	4900	150X4	300x1	80	50	50	50	5.6	4700	9850	
TYH-700T	750	3600	22	4600	6200	250	6000	5100	150X4	300x1	80	50	50	50	5.8	5080	10530	
TYH-800T	851	3600	30	5100	6200	250	6000	5100	150X4	300x1	80	50	50	50	5.8	5520	11570	
TYH-900T	955	4200	37	5300	6800	310	6850	5510	200X4	350x1	80	50X2	50	50	6.2	6330	13880	
TYH-1000T	1055	4700	45	5500	7300	310	7200	6100	200X4	350x1	80	50X2	50	50	6.8	7000	15550	

NOTE:

1. HDG Steel Internal piping is standard for model TYH-100T to TYH-350T
2. Motor (TEFC) is outside airstream for Model TYH-100T to TYH-200T.
3. Motor (TEAO) is inside airstream for Model TYH-250T to TYH-1000T
4. FRP Hot Water Basin Covers are standard accessory
5. HDG Steel Plenum Walkway is standard accessory
6. All Flanges are per JIS10K bolt pattern unless advise otherwise. Other bolt patterns are available. Connecting Flanges are provided.
7. Flowrate based on 37 °C Hot Water, 32 °C Cold Water, 28 °C Wet Bulb

COOLING TOWER DIMENSIONS



TYH - TYPE "I"

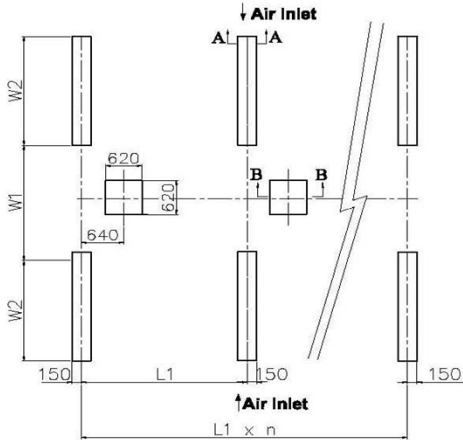
Parameter Model	Cooling Water Flowrate m ³ /h	Power System		Outline Dimensions					Piping Connections					Pump Head m	Weight		
		Fan Dia Φ mm	Motor Power Kw	Length		Width		High	Inlet Dia mm	Outlet Dia mm	Overflo w Dia mm	Auto Make Up Dia mm	Quick Make Up Dia mm		Drain Dia mm	Dry kg	Wet kg
				(L) mm	(W) mm	(h1) mm	(H) mm	(h) mm									
TYH-100I	126	1500	5.5	1900	3480	170	3630	3060	150x1	150x1	80	20	20	50	3.7	1080	2280
TYH-125I	152	1500	7.5	2100	3480	170	3630	3060	150x1	150x1	80	20	20	50	3.7	1190	2390
TYH-150I	185	1800	7.5	2100	3780	170	4270	3680	150x1	150x1	80	20	20	50	4.1	1290	2590
TYH-175I	215	2200	11	2600	4180	200	4400	3680	200x1	200x1	80	20	20	50	4.1	1400	2900
TYH-200I	235	2200	11	2600	4180	200	4600	3880	200x1	200x1	80	25	25	50	4.3	1590	3200
TYH-225I	275	2200	15	2600	4180	200	4810	4090	200x1	200x1	80	25	25	50	4.6	1700	3850
TYH-250I	315	2500	15	3000	4480	200	4810	4090	200x1	200x1	80	25	25	50	4.6	2160	4350
TYH-300I	351	2500	15	3000	5080	200	4410	3690	200x1	200x1	80	25	25	50	4.2	2500	5150
TYH-350I	401	2500	18.5	3000	5080	200	4810	4090	200x1	200x1	80	40	40	50	4.6	2550	5300
TYH-400I	451	2950	18.5	3300	5550	220	5030	4190	125x4	250x1	80	40	40	50	4.7	2930	6280
TYH-450I	502	2950	18.5	3300	5550	220	5640	4800	125x4	250x1	80	40	40	50	5.5	3330	6680
TYH-500I	556	2950	22	3800	5550	250	5640	4800	150X4	300x1	80	40	40	50	5.5	3630	7480
TYH-550I	601	3400	22	3800	6000	250	5800	4900	150x4	300x1	80	50	50	50	5.6	4130	8280
TYH-600I	650	3400	22	4600	6000	250	5800	4900	150X4	300x1	80	50	50	50	5.6	4730	9880
TYH-700I	799	3600	30	4600	6200	250	6000	5100	150X4	300x1	80	50	50	50	5.8	5150	10600
TYH-800I	901	3600	37	5100	6200	250	6000	5100	150X4	300x1	80	50	50	50	5.8	5600	11650
TYH-900I	998	4200	45	5300	6800	310	6850	5510	200X4	350x1	80	50X2	50	50	6.2	6380	13930
TYH-1000I	1098	4700	55	5500	7300	310	7200	6100	200X4	350x1	80	50X2	50	50	6.8	7100	15650

NOTE:

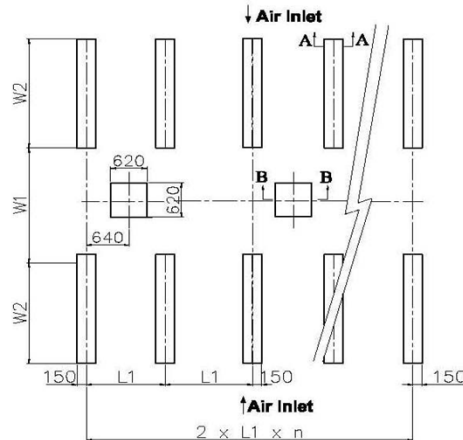
1. HDG Steel Internal piping is standard for model TYH-100I to TYH-350I
2. Motor (TEFC) is outside airstream for Model TYH-100I to TYH-150I
3. Motor (TEAO) is inside airstream for Model TYH-150I to TYH-1000I
4. FRP Hot Water Basin Covers are standard accessory
5. HDG Steel Plenum Walkway is standard accessory
6. All Flanges are per JIS10K bolt pattern unless advise otherwise. Other bolt patterns are available. Connecting Flanges are provided.
7. Flowrate based on 37 °C Hot Water, 32 °C Cold Water, 28 °C Wet Bulb

PLINTH DETAILS

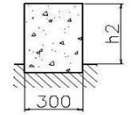
TYH-100 to TYH-150



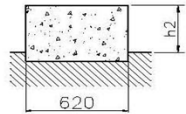
TYH-175 to TYH-225



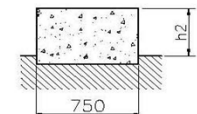
A-A SECTION



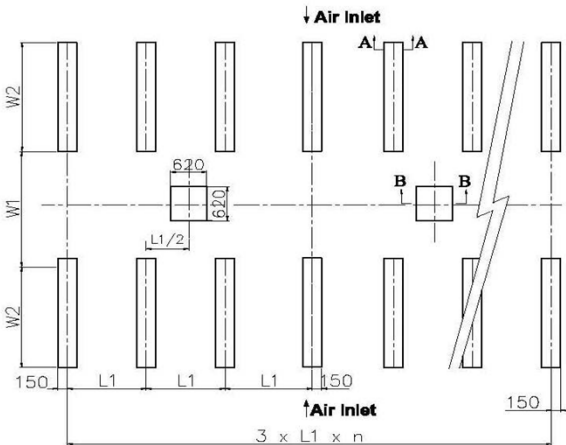
B-B SECTION



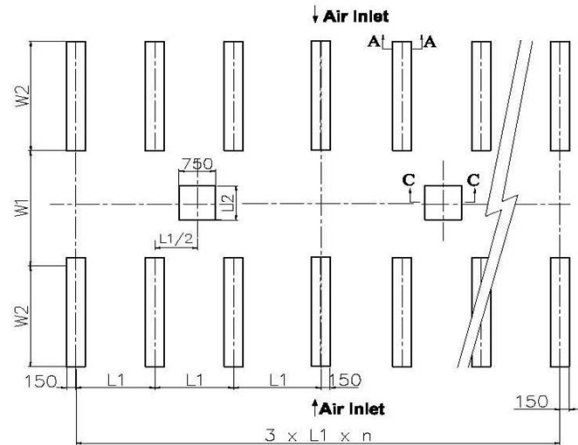
C-C SECTION



TYH-250 to TYH-350



TYH-400 to TYH-1000



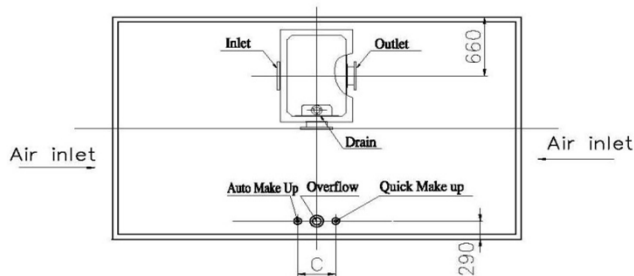
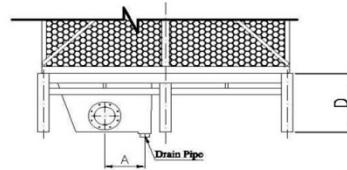
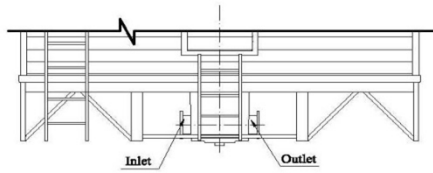
	TYH-100	TYH-125	TYH-150	TYH-175	TYH-200	TYH-225	TYH-250	TYH-300	TYH-350
L1	1860	2060	2060	1280	1280	1280	987	987	987
L2	/	/	/	/	/	/	/	/	/
W1	650	650	940	940	940	940	1240	1440	1440
W2	1550	1550	1550	1750	1750	1750	1750	1950	1950
h2	≥300	≥300	≥300	≥300	≥300	≥300	≥300	≥300	≥300
CT LENGTH	(1860x)n+40	(2060x)n+40	(2060x)n+40	(2560x)n+40	(2560x)n+40	(2560x)n+40	(2960x)n+40	(2960x)n+40	(2960x)n+40

	TYH-400	TYH-450	TYH-500	TYH-550	TYH-600	TYH-700	TYH-800	TYH-900	TYH-1000
L1	1087	1087	1250	1250	1517	1517	1683	1750	1817
L2	850	850	1000	1000	1000	1000	1000	1000	1000
W1	1910	1910	1910	1950	1950	2150	2150	2150	2150
W2	1950	1950	1950	2150	2150	2150	2150	2450	2700
h2	≥300	≥300	≥300	≥300	≥300	≥300	≥300	≥300	≥300
CT LENGTH	(3260x)n+40	(3260x)n+40	(3750x)n+40	(3750x)n+50	(4550x)n+50	(4550x)n+50	(5050x)n+50	(5250x)n+50	(5450x)n+50

n = number of cells

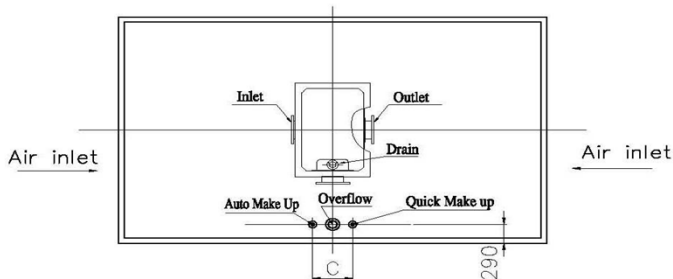
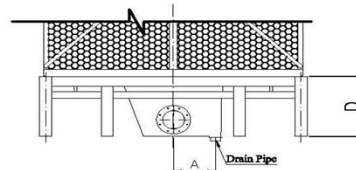
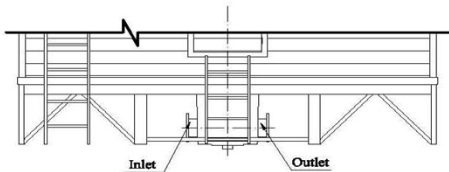
PIPING CONNECTION DETAILS

TYH-100 to TYH-250



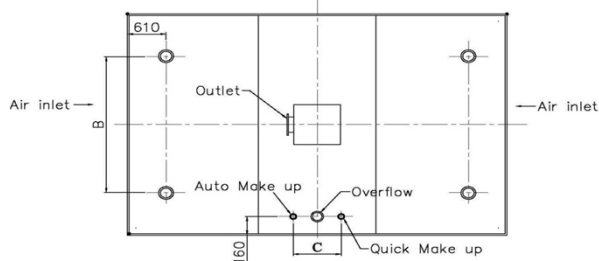
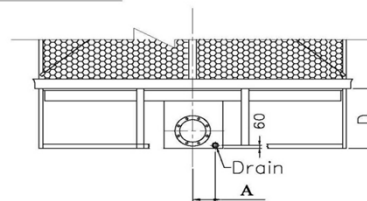
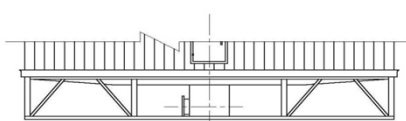
MODELS	TYH-100	TYH-125	TYH-150	TYH-175	TYH-200	TYH-225
A	180	180	180	180	180	180
B	/	/	/	/	/	/
C	380	380	380	380	380	380
D	650	650	650	650	650	650

TYH-250 to TYH-350



MODELS	TYH-250	TYH-300	TYH-350
A	180	180	180
B	/	/	/
C	380	400	400
D	650	650	650

TYH-400 to TYH-1000



MODELS	TYH-400	TYH-450	TYH-500	TYH-550	TYH-600	TYH-700	TYH-800	TYH-900	TYH-1000
A	250	250	240	240	240	240	240	240	240
B	1375	1375	1855	1855	2480	2480	1890	1890	2480
C	400	400	410	410	410	410	410	450	450
D	750	750	850	850	850	850	850	980	980

QUICK SELECTION TABLE – TYPE C

The diagrams below show the common combinations of various cold water, hot water and wetbulb temperature. However, if there is a difference in temperature combination, please contact **Thermal-Cell Sdn Bhd** for a selection of the cooling tower.

US GPM cooling capacity at the indicated Hot Water, Cold Water and Wet Bulb Temperatures

Deg F	INLET	100	100	100	100	98.6	98.6	98.6	97	97	96	96	95	104	104	96.8	96.8	95
	OUTLET	90	90	90	90	89.6	89.6	89.6	87	87	85	86	86	86	89.6	89.6	87.8	87.8
WETBULB	85	84	83	82	82.4	81.5	80.6	82	81	80	81	81	81	84.2	82.4	80.6	82.4	80.6

Deg C	INLET	37.78	37.78	37.78	37.78	37.00	37.00	37.00	36.11	36.11	35.00	35.56	35.00	40.00	40.00	36.00	36.00	35.00
	OUTLET	32.22	32.22	32.22	32.22	32.00	32.00	32.00	30.56	30.56	29.44	30.00	30.00	30.00	32.00	32.00	31.00	31.00
WETBULB	29.44	28.89	28.33	27.78	28.00	27.50	27.00	27.78	27.22	26.67	27.22	27.22	27.22	29.00	28.00	27.00	28.00	27.00

MODEL (TYPE C)	US GPM																
TYH-100C	348	387	416	444	440	467	491	331	361	316	327	340	313	354	423	368	353
TYH-125C	436	484	520	554	550	583	614	414	451	395	408	425	391	442	528	460	441
TYH-150C	522	581	624	665	660	700	737	497	542	474	490	510	469	531	634	552	529
TYH-175C	609	677	728	776	770	816	860	580	632	553	566	595	547	619	740	644	617
TYH-200C	696	774	832	887	881	933	983	663	722	632	654	680	625	708	846	736	705
TYH-225C	783	871	936	998	991	1050	1105	745	812	710	735	764	703	796	951	827	793
TYH-250C	872	968	1040	1109	1101	1166	1228	828	903	789	807	849	781	884	1057	919	881
TYH-300C	933	1161	1248	1331	1321	1400	1474	994	1083	947	978	1019	938	1061	1268	1103	1058
TYH-350C	1218	1355	1456	1552	1541	1633	1719	1159	1264	1105	1141	1189	1094	1238	1480	1287	1234
TYH-400C	1392	1548	1664	1774	1761	1866	1965	1325	1444	1263	1294	1359	1250	1415	1691	1471	1410
TYH-450C	1566	1742	1872	1996	1981	2099	2211	1491	1625	1421	1470	1529	1406	1592	1902	1655	1586
TYH-500C	1744	1935	2080	2218	2201	2333	2456	1656	1805	1579	1614	1699	1563	1769	2114	1839	1763
TYH-550C	1918	2129	2288	2439	2421	2566	2702	1822	1986	1737	1775	1869	1719	1946	2325	2023	1939
TYH-600C	2093	2322	2496	2661	2642	2799	2948	1988	2166	1895	1956	2039	1875	2123	2537	2207	2115
TYH-700C	2436	2709	2912	3105	3082	3266	3439	2319	2527	2210	2282	2378	2188	2476	2959	2574	2468
TYH-800C	2784	3096	3328	3548	3522	3732	3930	2650	2888	2526	2601	2718	2500	2830	3382	2942	2820
TYH-900C	3132	3483	3744	3993	3962	4198	4422	2982	3250	2842	2940	3058	2812	3184	3804	3310	3172
TYH-1000C	3488	3870	4160	4436	4402	4666	4912	3312	3610	3158	3228	3398	3126	3538	4228	3678	3526

Model Definition: TYH-100C-2-S

Example:

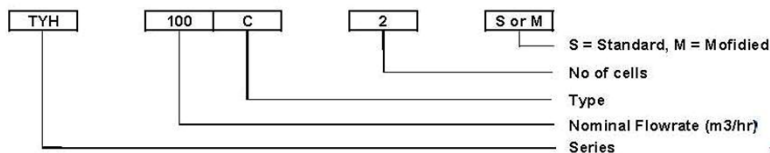


Table Notes:

- Flowrate based on 37 °C Hot Water, 32 °C Cold Water, 28 °C Wet Bulb
- 1 m3/hr = 4.405 GPM (approximate)
- If temperature conditions differ from the selected common combinations, please refer to your Thermal-Cell Sdn Bhd's Engineers



QUICK SELECTION TABLE – TYPE T

US GPM cooling capacity at the indicated Hot Water, Cold Water and Wet Bulb Temperatures

Deg F	INLET	100	100	100	100	98.6	98.6	98.6	97	97	95	96	95	104	104	96.8	96.8	95
	OUTLET	90	90	90	90	89.6	89.6	89.6	87	87	85	86	86	89.6	89.6	87.8	87.8	86
	WETBULB	85	84	83	82	82.4	81.5	80.6	82	81	80	81	81	84.2	82.4	80.6	82.4	80.6
Deg C	INLET	37.78	37.78	37.78	37.78	37.00	37.00	37.00	36.11	36.11	35.00	35.56	35.00	40.00	40.00	36.00	36.00	35.00
	OUTLET	32.22	32.22	32.22	32.22	32.00	32.00	32.00	30.56	30.56	29.44	30.00	30.00	32.00	32.00	31.00	31.00	30.00
	WETBULB	29.44	28.89	28.33	27.78	28.00	27.50	27.00	27.78	27.22	26.67	27.22	27.22	29.00	28.00	27.00	28.00	27.00

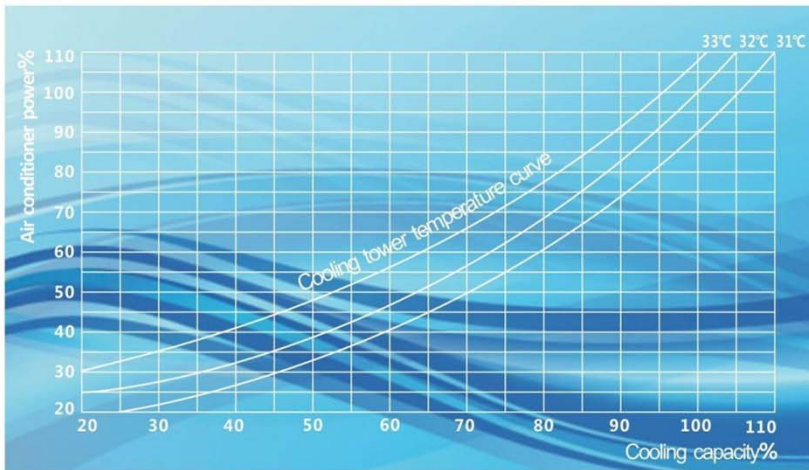
MODEL (TYPE T)	US GPM																	
TYH-100T	403	448	482	513	510	540	569	383	418	366	379	393	362	410	489	426	408	
TYH-125T	474	526	565	598	594	634	668	450	491	429	444	462	425	481	575	500	479	
TYH-150T	571	635	683	722	717	765	806	544	592	518	536	557	513	580	694	603	578	
TYH-175T	706	785	844	893	887	946	996	672	732	640	656	689	634	718	858	746	715	
TYH-200T	758	843	906	959	952	1016	1070	722	786	688	712	740	681	771	921	801	768	
TYH-225T	852	948	1019	1078	1071	1143	1203	811	884	773	800	832	766	867	1036	901	863	
TYH-250T	963	1068	1148	1215	1207	1287	1356	914	996	871	891	938	862	976	1167	1015	973	
TYH-300T	998	1242	1335	1413	1403	1497	1577	1063	1159	1013	1046	1090	1003	1135	1357	1180	1131	
TYH-350T	1308	1455	1564	1655	1644	1754	1847	1245	1357	1187	1226	1277	1175	1330	1589	1383	1325	
TYH-400T	1478	1644	1767	1870	1857	1982	2087	1407	1534	1341	1374	1443	1328	1503	1796	1562	1497	
TYH-450T	1674	1862	2002	2118	2103	2245	2364	1594	1737	1519	1572	1635	1504	1702	2034	1769	1696	
TYH-500T	1813	2012	2163	2289	2273	2425	2554	1722	1877	1642	1678	1766	1625	1839	2198	1912	1833	
TYH-550T	1994	2213	2379	2518	2500	2668	2809	1894	2065	1806	1846	1943	1787	2023	2418	2103	2016	
TYH-600T	2176	2418	2599	2751	2732	2915	3069	2070	2256	1973	2037	2123	1953	2210	2641	2298	2202	
TYH-700T	2610	2902	3119	3301	3278	3498	3684	2484	2707	2368	2445	2548	2343	2653	3170	2758	2643	
TYH-800T	2961	3293	3540	3746	3720	3969	4180	2819	3072	2687	2767	2891	2659	3010	3597	3129	2999	
TYH-900T	3323	3695	3972	4203	4174	4454	4691	3164	3448	3015	3119	3244	2983	3378	4036	3511	3365	
TYH-1000T	3679	4082	4388	4643	4611	4922	5181	3493	3808	3331	3405	3584	3297	3732	4460	3879	3719	

QUICK SELECTION TABLE – TYPE I

US GPM cooling capacity at the indicated Hot Water, Cold Water and Wet Bulb Temperatures

Deg F	INLET	100	100	100	100	98.6	98.6	98.6	97	97	95	96	95	104	104	96.8	96.8	95
	OUTLET	90	90	90	90	89.6	89.6	89.6	87	87	85	86	86	89.6	89.6	87.8	87.8	86
	WETBULB	85	84	83	82	82.4	81.5	80.6	82	81	80	81	81	84.2	82.4	80.6	82.4	80.6
Deg C	INLET	37.78	37.78	37.78	37.78	37.00	37.00	37.00	36.11	36.11	35.00	35.56	35.00	40.00	40.00	36.00	36.00	35.00
	OUTLET	32.22	32.22	32.22	32.22	32.00	32.00	32.00	30.56	30.56	29.44	30.00	30.00	32.00	32.00	31.00	31.00	30.00
	WETBULB	29.44	28.89	28.33	27.78	28.00	27.50	27.00	27.78	27.22	26.67	27.22	27.22	29.00	28.00	27.00	28.00	27.00

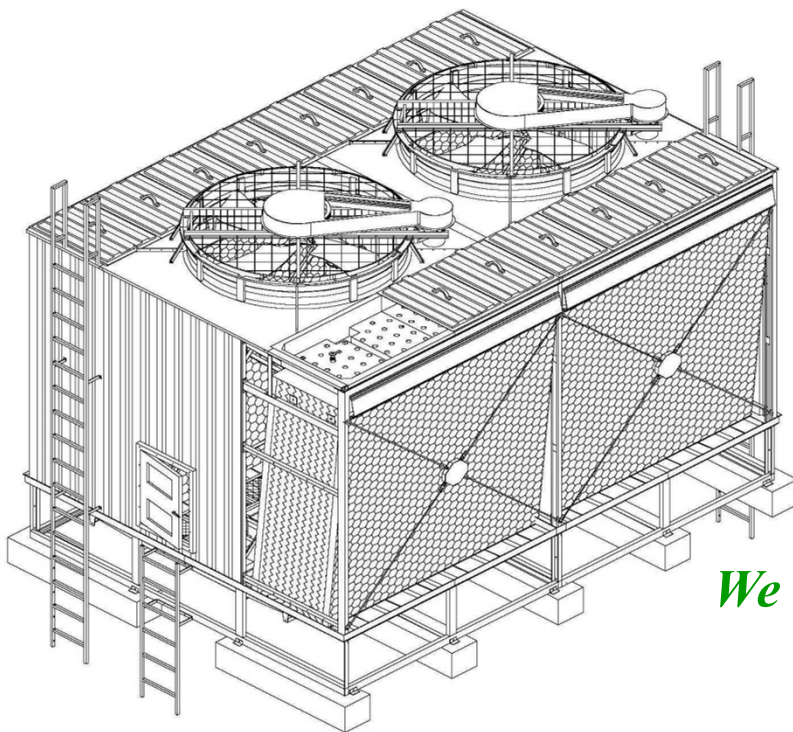
MODEL (TYPE I)	US GPM																	
TYH-100I	438	488	524	559	555	588	619	417	455	398	412	428	394	446	533	463	444	
TYH-125I	530	588	632	674	669	709	747	504	549	480	496	516	475	538	643	559	536	
TYH-150I	643	716	770	820	814	863	909	613	668	584	604	629	578	654	782	680	652	
TYH-175I	748	832	894	954	947	1003	1056	712	776	679	695	730	672	761	909	791	758	
TYH-200I	818	909	978	1042	1035	1096	1154	778	848	742	768	798	734	831	993	864	828	
TYH-225I	957	1064	1144	1220	1211	1283	1351	911	993	868	898	934	869	973	1163	1011	969	
TYH-250I	1098	1219	1310	1397	1387	1469	1547	1043	1137	995	1017	1070	984	1114	1332	1158	1110	
TYH-300I	1092	1358	1460	1557	1545	1637	1724	1163	1267	1108	1144	1193	1097	1242	1484	1291	1237	
TYH-350I	1395	1552	1668	1778	1765	1871	1970	1328	1448	1266	1307	1362	1253	1419	1695	1475	1414	
TYH-400I	1569	1745	1876	2000	1986	2104	2216	1494	1628	1424	1459	1532	1409	1595	1907	1659	1590	
TYH-450I	1747	1943	2088	2226	2210	2342	2466	1663	1812	1585	1640	1706	1569	1776	2122	1846	1770	
TYH-500I	1939	2152	2313	2466	2448	2594	2731	1842	2007	1756	1795	1889	1738	1967	2350	2045	1960	
TYH-550I	2132	2367	2544	2712	2693	2853	3004	2026	2208	1931	1974	2078	1911	2164	2586	2249	2156	
TYH-600I	2326	2516	2704	2883	2862	3032	3193	2153	2347	2052	2119	2208	2031	2299	2748	2390	2291	
TYH-700I	2780	3092	3324	3544	3518	3727	3925	2647	2884	2523	2605	2715	2497	2826	3378	2938	2816	
TYH-800I	3135	3487	3748	3996	3967	4203	4426	2985	3253	2845	2929	3061	2816	3187	3809	3313	3176	
TYH-900I	3473	3862	4152	4428	4393	4655	4904	3307	3604	3151	3260	3391	3118	3531	4218	3670	3517	
TYH-1000I	3830	4249	4568	4871	4833	5123	5393	3637	3964	3467	3644	3731	3432	3885	4642	4038	3872	



Number 11-40-01

**Absolute Guarantee of
Thermal Performance**

TYH SERIES RECTANGLE CROSS FLOW COOLING TOWER



*We sell **COLD** water !*

AUTHORIZED DISTRIBUTOR



Thermal-Cell Sdn Bhd
No 7B-1, Jalan Dinar B, U3/B,
Taman Subang Perdana,
40150 Shah Alam,
Selangor, Malaysia

Tel: + 6-03-7842 5531
Fax: +6-03-7842 5530
Email: Inquiry@thermal-cell.com
Website: www.thermal-cell.com